

DISPENSING SYSTEMS CATALOG



Dispensing Innovation

DEMA®

Why Dema?

Who We Are

- Family owned and operated third generation business based in St. Louis, Missouri.
- Over 60 years of engineering, designing and manufacturing experience.
- Four U.S. manufacturing facilities with distribution warehouses in eastern Missouri and northeastern Pennsylvania.
- International operations in The Netherlands, Australia, Brazil and China.

Manufacturing Capabilities

- Extensive machining and manufacturing equipment with over 100 conventional, custom, milling and CNC machines.
- Manufacturing processes include injection molding, plating, welding and brazing.
- Quality initiatives include ISO 9001:2008 registered and the 5S process for increased consistency, safety, efficiency and productivity and Failure Mode & Effect Analysis (FMEA) for all product development and improvement.

Engineering Expertise

- Resources and capabilities to support unique customer specific projects.
- Custom design and prototyping capabilities in SolidWorks and AutoCAD design.
- Extensive machining and other metal and plastic manufacturing and prototyping.
- In-house SLA, RTV and electronics prototyping for most any dispensing need.
- Extensive laboratory facilities with a full range of commercial equipment for high pressure, temperature and automated accelerated lifecycle testing.

Committed Support

- Regional sales management from experienced managers for on-site training, sales and installation support.
- Corporate resources include senior sales, R&D and marketing for custom programs, training and major account initiatives.
- Dedicated phone based customer and technical support representatives with extensive knowledge and expertise to help choose the right equipment for your application.
- International support from Europe, Australia, Brazil and China based sales and operations managers with sales, warehousing, light manufacturing and customization capabilities.

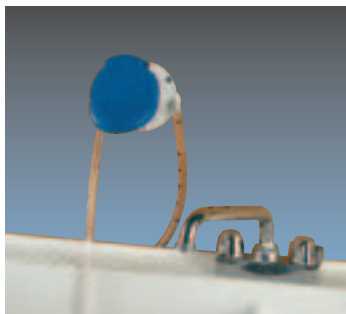


TABLE OF CONTENTS

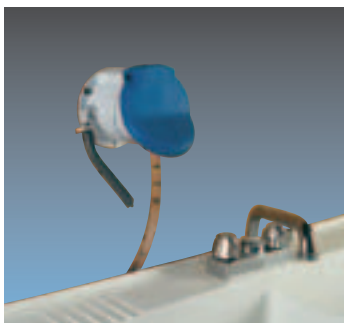
- 2 Food Service Kitchen Dispensers**
Wall Mounted Pumps and Faucet Proportioners
- 3 Food Service Kitchen Dispensers**
Single and Dual Sink Dispensers, Faucet Adapter Kits and Drain and Odor Control Dispensing Systems
- 4 Warewash Dispensers**
Titan Probe/Probeless Dispensing Systems
- 5 Warewash Dispensers**
Nitro and Nitro Express Probe/Probeless Dispensing Systems
- 6 Warewash Dispensers**
Olympian Mini Pumps, DemaMaster Probe/Probeless Dispensers and Detergent and Rinse Bowls
- 7 Solid Product Dispensers**
Solid Laundry Dispensers, Accessories, and Bowl Options
- 8 Warewash and Laundry Dispenser Parts**
Tubing, Fittings, Probes, Motors and Miscellaneous
- 9 Warewash and Laundry Dispenser Parts**
Pump Kits, Laundry Kits, Flush Manifolds and Flush Kits
- 10 Laundry Dispensing Systems**
844P Atlas and 846E LaundryMaster Laundry Dispensers
- 11 Laundry Dispensing Systems**
Programming and Formula Select Remotes and 844 LaundryMaster Laundry Dispensers
- 12 Laundry and Housekeeping Dispensing Systems**
Top Shot, 830 Series and Low Level Alarm Laundry Systems and 633 and 681 Blend Centers Housekeeping Dispensers
- 13 Blend Safe Housekeeping Dispensing Systems**
Stainless Steel and Plastic Enclosed, Locking Systems and Dispensers Only
- 14 Dilution at Hand Extreme Housekeeping Dispensing Systems**
Enclosed, Locking Systems and Dispensers Only
- 15 Dilution at Hand Extreme Housekeeping Dispensing Systems**
Enclosed, Locking Systems and Dispensers Only
- 16 Housekeeping Dispenser Parts**
- 17 Industrial Dispensing Systems**
Float Valve Dispensers, High Flow Dispensers and Drum Mount Proportioners
- 18 Spray and Foam Dispensing Systems**
Rapid Fire Spray and Foam Dispensers
- 19 Spray and Foam Dispensing Systems**
Spray Station II, Select-O-Matic, Spray Guns, Foam Wands and Hoses
- 20 Compressed Air Foam Dispensing Systems**
Compressed Air Foamers, Foam Wands, FoamStation Dispensers
- 21 Compressed Air Foam Dispensing Systems**
900 Series Dispensers
- 22 MixRite Proportioning Pumps**
Water driven proportioning pumps
- 23 MixRite Foamers and Mobile Cart Cleaning Systems**
Wall and Cart Mounted Foaming MixRites and Mobile Cart Spray, Foam and Compressed Air Systems
- 24 Chemical Injectors and SprayClean Injectors**

302 Series Hand Pump

Designed to pump 1 or 2 ounces (30 or 60 milliliters) of detergent, sanitizer, or other chemical into kitchen sink, bottle, dry cleaning machine, or any open container where chemical is mixed with water. Each push delivers 1 or 2 ounces with the pump automatically maintaining its prime for future use.



302-1E



302-2S-SP

- 1 or 2 ounce pumps available (30 or 60 milliliters)
- Polypropylene body and polyethylene bellows for chemical resistance
- Epdm, silicone, or viton seals available on check valves
- Chemical does not come in contact with spring
- Mounts on any vertical or horizontal surface
- Optional spout available (part number 30-81-1)

MODEL No.	FLOW	CHECK VALVE SEAL
302-1E	1 ounce (30 ml)	epdm
302-1S	1 ounce	silicone
302-1V	1 ounce	viton
302-2E	2 ounce (60 ml)	epdm
302-2S	2 ounce	silicone
302-2V	2 ounce	viton

Add suffix - SP at end of number for unit to include spout

Example: 302-1E-SP

EPDM seals recommended for detergent use
Silicone seals recommended for chlorine use
Viton seals recommended for solvent use

Faucet Mounted Proportioners

DEMA Faucet Proportioners attach to any standard faucet and dispense a chemical and water mixture into the sink by either pushing a button or sliding a knob. Chemical dilution is determined by using metering tips on some units and a metering screw adjustment on others.

Models 151 and 153

Use color coded metering tips to determine dilution ratio

Standard tip kit is 100-15K

Ultra Lean tip kit is 100-15KU

Models 152 and 154

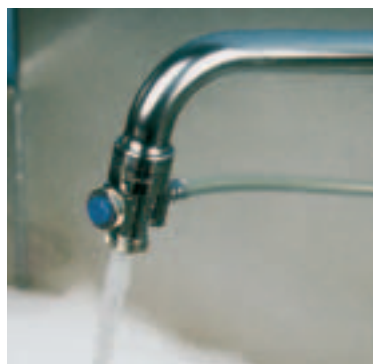
Use metering screw adjustment to determine dilution ratio

Models 153 and 154

Includes a built in ASSE approved siphon breaker

Models 167 and 167T

Uses a slide valve actuator to determine if a chemical solution is dispensed or water only. Unit is available standard with metering screw and metering tips.



Model 153



Model 167

Special adapters available for faucet proportioners

150-9-2 Irregular faucet adapter (uses rubber sleeve and worm clamp to attach on)

150-21 Inside Aerator Thread Adapter

150-22 Outside Chicago Thread Adapter

150-32 Inside Kohler Thread Adapter

Single and Dual Sink Dispensers

Model ProFill 651 Single Sink Dispenser dispenses one product into a kitchen sink with the turn of a ball valve. Available with Action Gap or air gap backflow protection and compression or garden hose connection.

Model ProFill 652

Dual Sink Dispenser dispenses two products into a kitchen sink with the turn of a ball valve. Available with Action Gap or air gap backflow protection and garden hose connection. Also available with compression fittings with dual or single water inlet.

Model Options: GAP after model number for Action Gap (651GAP) and AG for air gap. Both have ASSE 1055 approval. Check local plumbing regulations for proper backflow. Add -1M or -2M (651 or 652) for compression fitting connection.



PF651GAP

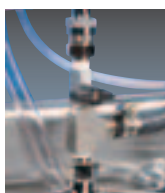


PF652GAP

Faucet Adapter Kits

Model 68-4 Faucet Adapter Kit

Makes installing proportioning equipment over the sink neat and easy. The kit includes adapters for Chicago, Fisher, and T & S faucets. A pre-built manifold consisting of a tee, ball valve, and water hose allows user to control water flow to sink or dispenser.



68-4

Model 68-4-2

Includes Fisher adapters only and manifold assembly

Model 68-4-3

Includes Chicago adapters only and manifold assembly

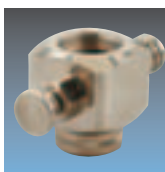
Model 68-4-4

Includes T & S adapters only and manifold assembly

Model 68-21

T & S Scrap hose sink adapter kit

Model 591 Water Diverter Valve screws on end of faucet and diverts water to dispenser by pulling a plunger while water is on.



591

Drain and Odor Control Dispensing Systems



257C Drain Chief



2500 Squirt

Automatically feeds chemicals into drains and grease traps to break up grease and detergent buildup and eliminate odors. Additional applications include odor control in dumpsters and trash chutes. Typical environments include food service, lodging, food processing, waste processing and water treatment.

Model 257C Drain Chief

Operates on 8 D-cell batteries or optional wall plug. Uses electronic timer for dosing activations and is capable of up to 8 feeds per 24 hours.

Model 2500 Squirt

Operates on 12V plug-in transformer. Uses electronic timer for dosing activations and is capable of up to 8 feeds per 24 hours. This small compact unit uses the Olympian pump platform. International versions available with plug-in adapters.

Model 259CT Pro Scentnal

The Pro Scentnal is the same unit as the 257C Drain Chief but utilizes a brass spray nozzle for spray application into dumpsters, trash chutes and other areas for odor control. Uses standards 115 VAC wall plug and manual timer capable of 2 feeds per hour and 28 feeds per 24 hours. Can be used without spray nozzle as a traditional drain / dosing system.



259CT Pro Scentnal

TITAN Warewash Dispensers

Probe and Probeless Operation with Auto-Switchover

DEMA's TITAN range of warewash dispensers was developed to reduce the number of service calls and create a more profitable installation at all types of warewash accounts. The unit can be set up in concentration, probeless or auto switchover mode depending on the installation requirements. If set up in auto switchover mode, the unit will automatically switch over to probeless mode if any of the following conditions are met:

- Shorted probe
- Open probe
- Limed up probe
- Dispenser does not feed for a period of time
- Dispenser over feeds for period of time

Once the condition is resolved, the unit will switch itself back to concentration mode. This feature greatly reduces the number of service calls and allow better use of service and sales groups' time. The TITAN is truly a first of its kind; a dispenser that will pay for itself.



T-813-DLL



T-812-LL



81-118-18
Sanitizer/Rinse module



No Tool Quick change
pump cover

Features and Benefits

Enclosure

- Modular design allows for easy conversion to 3 product system
- ABS material for durability
- Stainless steel mounting plate for easy wall removal
- Digital display

Features and Benefits continued

Pumps

- Quick change squeeze tube with no tools required
- Quick connect fittings
- Spring loaded 2-roller design for extended tubing life
- 16 ounces per minute with 60 RPM gear motor (detergent)

Electronics and Programming Specifications

- Programmable with keypad for quick setup
- 100-265 VAC 50/60 Hz with auto-switching power supply
- Pre-wired for quicker installation
- Isolated trigger board for 24VAC to 480VAC
- Probeless alarms for liquid or dry products
- Diagnostic mode
- Feed rate adjustment adapts to size of machine
- Non-volatile memory allows pre-programming prior to installation
- Built in rack counter
- Multilingual display - English, Spanish, French and Portuguese
- Programmable company information and service message to personalize dispenser

MODEL NO.	NUMBER OF CHEMICALS	PUMP OR SOLENOID VALVE
T-811-L	1	Pump
T-811-D	1	Solenoid Valve
T-812-LL	2	Pump/Pump
T-812-DL	2	Solenoid/Pump
T-813-LLL	3	Pump/Pump/Pump
T-813-DLL	3	Solenoid/Pump/Pump

All models come complete with probe, detergent injection fitting, rinse injection fitting, mounting plate, and poly tubing

TITAN and NITRO Accessories:

Model 82-23-1 Magnetic Field Sensor (MFS)

Patent-pending technology to reduce installation time and create a safer environment for service personnel. The MFS is a wireless pump activator that eliminates the need for a direct electrical connection to activate the the solenoid or pump.

- Eliminate need for direct electrical connection to customer's equipment
- Provide electrical isolation from control circuits
- Eliminate need to get into control box on warewash machine

Model 82-28-1 Inductive Probe

Higher technology probe designed so the coils never see chemical or hard water in the warewash machine, thus making it a non-service item.

- Significant reduction in probe maintenance
- Temperature compensation built into probe for more accurate readings
- Helps maintain more accurate detergent concentration

NITRO Digital Warewash Dispensers

The Nitro warewash dispenser line bridges the gap between compact basic dispensers and feature packed units too large for small kitchens. Nitro has the versatility to be used with or without a probe from the same unit and delivers premium features in a compact size with reduced installation and maintenance requirements.

FEATURES and BENEFITS:

Enclosure

- Compact design fits almost anywhere
- Splash resistant ABS material for reliability and durability
- ABS mounting plate for easy wall mounting and removal
- Digital display

Pumps

- Proven Olympian pump platform
- Quick change pump cover for tool-less tube changing
- Entire pump easily removed by 1 screw for easy changing
- Detergent pump rate 6 oz per minute, rinse & sanitizer 1.35 oz.
- Separate pump module for sanitizer

Electronics and Programming Specifications and general features

- Pre-wired power supply to reduce installation time
- 100-265 VAC 50/60 Hz with auto-switching power supply
- Isolated trigger board for 24VAC to 480VAC
- Password protected digital programming with keypad
- Built-in rack counter
- Multilingual display – English Spanish, French and Portuguese
- Programmable company information and service message
- Can use optional magnetic field reader for faster and safer installation and inductive probe for hard water environments

MODEL No.	NUMBER OF CHEMICALS	PUMP OR SOLENOID VALVE
N-LL-TA	2	Pump/Pump
N-DL-TA	2	Solenoid/Pump
N-LLL-TA	3	Pump/Pump/Pump
N-DLL-TA	3	Solenoid/Pump/Pump
O-ADC	1	Pump for Sanitizer



N-LL-TA



N-DL-TA

NITRO EXPRESS Analog Warewash Dispensers



NE-DL-A



O-ADC Nitro/NE Sanitizer pump module

Nitro Express is the compact multi-feature dispenser with traditional analog programming. It has the versatility to be used with or without a probe from the same unit and has many of the same features as Nitro.

FEATURES and BENEFITS:

Enclosure

- Compact design fits almost anywhere
- Splash resistant ABS material for durability
- ABS mounting plate for easy wall mounting and removal
- Low level alarm and active / signal LED and priming switches on the front of the unit

Pumps

- Proven Olympian pump platform
- Quick change pump cover for tool-less tube changing
- Entire pump easily removed by 1 screw for easy change out if necessary
- Detergent pump rate 6 oz per minute, rinse & sanitizer 1.35 oz.
- Separate pump module for sanitizer

Electronics and Programming Specifications and general features

- Pre-wired power supply to reduce installation time
- 100-265 VAC 50/60 Hz with auto-switching power supply
- Isolated trigger board for 24VAC to 480VAC
- Program using traditional DIP switches and potentiometers

MODEL No.	NUMBER OF CHEMICALS	PUMP OR SOLENOID
NE-LL-A	2	Pump/Pump
NE-DL-A	2	Solenoid/Pump
* NE-LLL-A-NP	2	Pump/Pump
* NE-DLL-A-NP	2	Solenoid/Pump
NE-LLL-A	3	Pump/Pump/Pump
NE-DLL-A	3	Solenoid/Pump/Pump
O-ADC	1	Pump for Sanitizer

- * 2 product systems shipped with 3 product board.
Can accept a sanitizer pump addition

Olympian Mini Pumps

Ideal applications include under-counter washers, glass washers, and small commercial machines.

Specifications

- Dual voltage (115/230 VAC) or high voltage only (230 VAC) models
- Mini quick change pump allows tubing replacement in seconds
- Complete pump assembly removes without tools
- Units programmed via plug in 2 button programmer



O-PDV



O-RDV and O-SDV

Model No.	Application	Color	Specifications
O-PDV	Detergent	White	110 or 220 volt, time
O-PHV	Detergent	White	220 volt, time
O-RDV	Rinse	Blue	110 or 220 volt, speed control
O-RHV	Rinse	Blue	220 volt, speed control
O-SDV	Sanitizer	Blue	110 or 220 volt, speed control
81-245-1	Programmer		2 Button Programmer



DNE-LL

DEMAMaster NE Probe/Probeless Dispensers

DemaMaster NE is the analog warewash dispenser that uses the Nitro Express circuit board and quick change blue pump. DemaMaster is easy to program with traditional analog programming and built to reduce installation and service.

- Probe or probeless from the same unit
- Pre-wired power supply to reduce installation time
- Quick change pump cover for tool-less tube changing

Model No.	No. of Chemicals	Pump or Solenoid
DNE-LL	2	Pump/Pump
DNE-DL	2	Solenoid/Pump

Detergent and Rinse Bowls

Detergent and Rinse Bowls dispense solid or encapsulated powders into dish machines, sinks, laundry machines, or any other open reservoir. DEMA offers 2 bowl designs for different applications that can be used for almost any solid product applications.

- Mount on any vertical surface or on top of a dish machine
- Molded plastic or brass siphon breakers meet ASSE 1001 Standard
- Compression and other fittings for easy and secure tube installations



5800V



581-RB

5800V Includes wall mounting kit and bulk head fitting for dish machine use. Uses DEMA plastic siphon breaker. Brass siphon breaker available (5800V-B)

581-RB Solid rinse bowl with wall mounting kit and bulk head fitting plus solenoid valve and level control (24 VAC standard voltage)

581-RB-4 Solid rinse bowl with wall mounting kit and bulk head fitting plus solenoid valve and level control for use with Titan, Nitro, Nitro Express and DemaMaster NE dispensers



581-1BV



5800V-BV

Manual Bowl Dispensers

Uses a 1/4 turn ball valve to control water flow and dispense chemical into a kitchen sink or other reservoir. Needle valve controls chemical concentration by adjusting water flow. All the water flow is directed through a vacuum breaker to meet plumbing codes.

Electronic Solid Products Bowls



581KS-1W

Model 581KS-1W Solid Laundry Dispenser

Is a machine triggered dispensing system designed to easily and economically dispense solid laundry products. Programming is done with a removable 2 button programmer to avoid end user tampering. Color LED's indicate which function is running (delay, run time and lock out) and which function is being programmed with the 2 button programmer.

- Maximum delay is 20 minutes
- Maximum lock out time is 75 minutes
- Maximum run time is 5 minutes or 40 ounces

Model 581KIS-1W Solid Laundry Dispenser

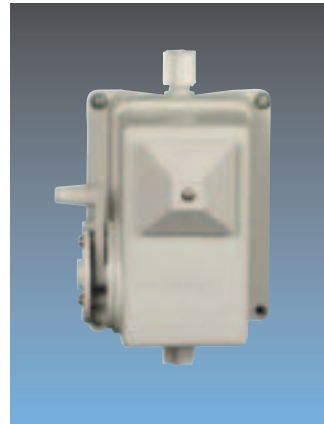
Operates similar to the 581KS-1W but it includes an injector mounted below the equipment tray that mixes the diluted product from the bowl reservoir with water and delivers it up to 50 feet (15 meters) away from the dispenser.



5800V-KS1W

Model 5800V-KS1W Super Bowl

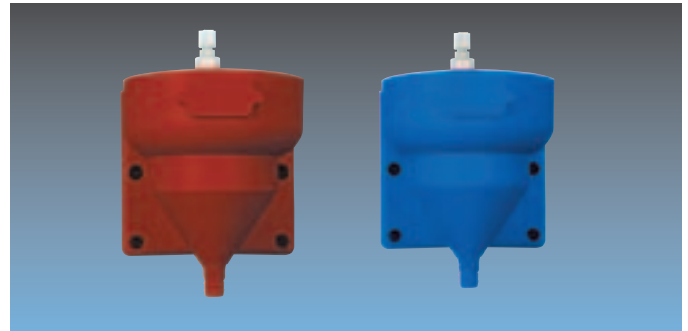
The SuperBowl is a battery-operated solid / powder chemical dispensing for pot and pan, silver soak, or laundry applications. The circuit board has programmable run time of 1 second to 10 minutes, built in 2, 5, and 10 minute lockouts (or no lockout) and a mid-cycle shut off. Can be operated manually or automatically from a machine signal.



25-21-8

Mechanical Timer

Mechanical timer needs no electricity or batteries and has a calibrated dial to control a timed water feed from 10-60 seconds. Can be used with 5800V, 5800V-B, 581-WMBH or other solid bowls.



Red, Blue and custom bowl colors available

Bowl Options and Availability

Custom colors and logos are available with minimum order quantities. Additional bowls not listed are also available. Contact DEMA customer service for most current models and additional information.

MODEL NO.	DESCRIPTION
Detergent and Rinse Bowls	
5800V	Viking bowl with plastic siphon breaker
5800V-B	Viking bowl with brass siphon breaker
581-WMBH	DEMA bowl with plastic siphon breaker
581-1WMBH	DEMA bowl with brass siphon breaker
581-RB	DEMA bowl with solenoid and level control (24 VAC)
581-RB-4	DEMA bowl with solenoid and level control (24 VAC) for use with Titan, Nitro, Nitro Express and DemaMaster NE
Manual Bowls	
581-1BV	DEMA bowl with ball valve and plastic siphon breaker
5800V-BV	Viking bowl with ball valve and plastic siphon breaker
Electronic Bowls	
581KS-1W	Dema Bowl with electronics
581KIS-1W	Dema Bowl with electronics and injector
5800V-KS1W	Viking bowl with electronics
Miscellaneous	
25-21-8	Mechanical Timer
Colored Bowls	Available for Viking bowls only contact customer service
Logo Bowls	Available for Viking bowls only contact customer service

Warewash and Laundry Pump Squeeze Tubing

PART NO.	TUBE MATERIAL	TUBE SIZE	LENGTH	FITTINGS INPUT/OUTPUT	APPLICATION
C2 Pump tubes for DM 811 & 812 Dispensers					
25.65CE.11	EPDM	1/2" OD X 1/4" ID	11"	None	Warewash and Laundry
25.65CV.11	Viton	1/2" OD X 1/4" ID	11"	None	Warewash and Laundry
25.65CA.11	Silicone	1/2" OD X 1/4" ID	11"	None	Warewash and Laundry
25.65NE.11	Santoprene	1/2" OD X 1/4" ID	11"	None	Warewash and Laundry
25.65RE.11	EPDM	1/2" OD X 3/16" ID	11"	None	Warewash -Rinse & Sanitizer
C4 Pump tubes for DM 821 & 822 Dispensers					
25.89CE.14	EPDM	5/8" OD X 3/8" ID	14"	None	Warewash, Laundry and Industrial
25.154.14	Silicone	5/8" OD X 3/8" ID	14"	None	Warewash, Laundry and Industrial
Quick Change Blue Pump Tubes for Titan and Atlas Dispensers					
81.177.1	EPDM	7/16" OD X 1/4" ID	*	1/4" John Guest	Warewash and Laundry
81.177.2	EPDM	7/16" OD X 1/8" ID	*	1/4" John Guest	Warewash -Rinse & Sanitizer
81.177.4	Silicone	7/16" OD X 1/8" ID	*	1/4" John Guest	Warewash and Laundry
81.177.5	Viton	7/16" OD X 1/8" ID	*	1/4" John Guest	Warewash and Laundry
81.177.6	EPDM	7/16" OD X 1/4" ID	*	3/8" Barb	Warewash and Laundry
81.177.8	Viton	7/16" OD X 1/4" ID	*	3/8" Barb	Warewash and Laundry
81.177.9	Silicone	7/16" OD X 1/4" ID	*	3/8" Barb	Warewash and Laundry
Large Blue Quick Change Pump for Atlas, 845 and 846 Dispensers					
84.208.1	EPDM	5/8" OD X 3/8" ID	*	3/8" John Guest	Laundry and Industrial
84.208.2	EPDM	5/8" OD X 3/8" ID	*	3/8" Barb	Laundry and Industrial
84.208.3	Silicone	5/8" OD X 3/8" ID	*	3/8" John Guest	Laundry and Industrial
84.208.4	Silicone	5/8" OD X 3/8" ID	*	3/8" Barb	Laundry and Industrial
84.208.5	Viton	5/8" OD X 3/8" ID	*	3/8" John Guest	Laundry and Industrial
84.208.6	Viton	5/8" OD X 3/8" ID	*	3/8" Barb	Laundry and Industrial
Olympian Quick Change Pump for Olympian, Nitro, Nitro Express, Top Shot and Squirt Dispensers					
81.231.1	EPDM	11MM X 5MM	*	1/4" Compression	Warewash, Laundry and other
81.231.6	Silicone	11MM X 5MM	*	1/4" Compression	Warewash, Laundry and other
81.231.4	EPDM	11MM X 5MM	*	Cone Fitting	Warewash, Laundry and other
81.231.5	Silicone	11MM X 5MM	*	Cone Fitting	Warewash, Laundry and other
* Fitted for appropriate DEMA pumps					
Other tubing options available contact customer service					

Warewash Probes and Fittings

C-12VIK	Detergent Flip Probe
81-28-1	Inductive Probe (For Titan and Nitro only)
80-55	90° Fitting for Liquid Detergent Connection
81-260-1	Universal 90° Fitting Connection (3/8 or 7/8 hole size)
58-5	70° Injection Fitting for Bowl Connection
904-8S	1/4"Tube X 1/8" NPT Stainless Check Valve, Stainless Ball
904-8T	1/4"Tube X 1/8" NPT Stainless Check Valve, Teflon Ball
904-8KY	1/4"Tube X 1/8" NPT Kynar Check Valve, Stainless Ball
904-4S	1/4"Tube X 1/8" NPT Stainless Check Valve, Stainless Ball
904-4T	1/4"Tube X 1/8" NPT Stainless Check Valve, Teflon Ball

Solenoid Valves

442J-WW-4B	Brass Solenoid Valve with cover and bracket
81-316-6	Solenoid Valve Kit for Nitro and Nitro Express
81-118-19	Solenoid Valve Kit for Titan



Warewash and Laundry Motors

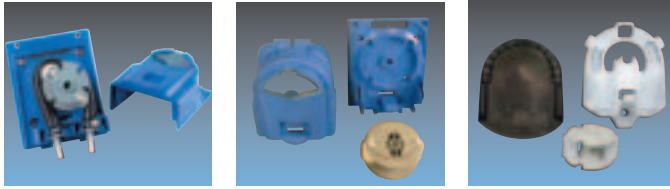
Model No.	Voltage	RPM	Dispenser
80-59-15MK	24 VDC	15 rpm	Titan and Atlas
80-59-60MK	24 VDC	60 rpm	Titan and Atlas
80-59-105MK	24 VDC	105 rpm	Titan and Atlas
81-13-115MK	115 VAC 60Hz	115 rpm	846
81-14-230MK	230 VAC 60 Hz	115 rpm	846
81-15-115MK	115 VAC 60 Hz	60 rpm	846
81-17-230MK	230 VAC 50 Hz	115 rpm	846
81-289-230MK	230 VAC 50/60 Hz	60 rpm	846
81-316-10	24 VDC	118 rpm	Nitro / NE
81-316-11	24 VDC	35 rpm	Nitro / NE

Miscellaneous Parts

58-2	ASSE 1001 Approved Plastic Siphon Breaker with Fittings
81-53	Test Kit
80-66	10" Pick Up Tube 1/4" ID
80-66-2	18" Pick Up Tube 1/4" ID
81-312-1	12" Pick Up Tube 1/4" ID
81-312-3	17" Pick Up Tube 1/4" ID



Pump Head Kits



QC Blue Pump Large Blue Pump Olympian Pump

Quick Change Blue Pump

81-118-15 Detergent Pump Kit-2 Roller Spring Loaded

81-118-16 Rinse Pump Head Kit-3 Roller Fixed

81-118-17 Detergent Pump Kit-2 Roller Fixed

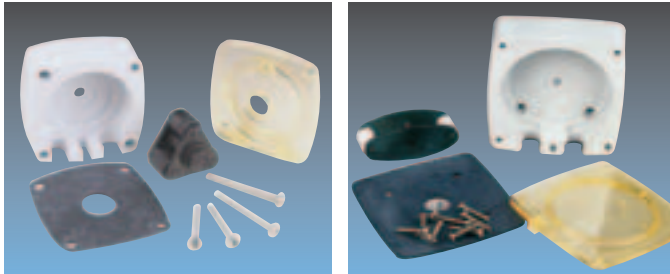
Large Blue Quick Change Pump

84-65-41 Pump Kit complete

Olympian/Nitro Quick Change Pump

81-316-8 Detergent Pump Kit – 2 Roller complete

81-316-9 Rinse Pump Kit – 3 roller complete



25-C2

25-130-1

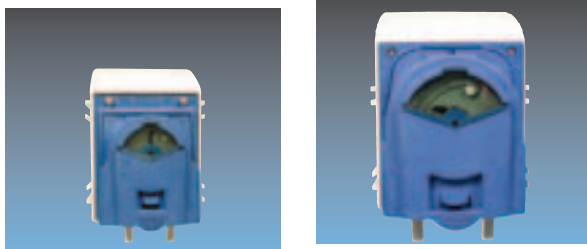
C2 and C4 Pump

25-C2 Tri-Roller Rinse Pump Complete

25-C2D Dual Roller Detergent Pump Complete

25-130-1 Large Pump Kit Complete

Pump Modules



QC Blue Pump Module

Large Blue Pump Module

Quick Change Blue Pump

81-118-18 15 rpm Pump Module Kit

81-118-22 60 rpm Pump Module Kit

84-65-29 105 rpm Pump Module Kit with 3/8" JG fittings

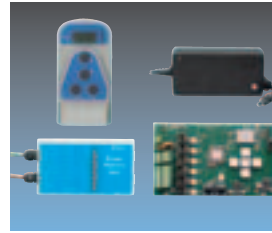
84-65-30 105 rpm Pump Module Kit with 3/8" Barb fittings

Large Blue Quick Change Pump

84-65-36 105 rpm Pump Module Kit with 3/8" JG fittings

84-65-37 105 rpm Pump Module Kit with 3/8" Barb fittings

Laundry Kits



Laundry Conversion Kits

84-65-1 AC Laundry Conversion Kit with on board programming

84-65-1E AC Laundry Conversion Kit EDSM and Data Grip Ready

84-65-1E

AC Laundry Conversion Kit



Valve Module Kits for ATLAS

84-65-32K Flush Manifold Valve and Plumbing Connection Kit

84-65-32 Flush Manifold Valve Kit

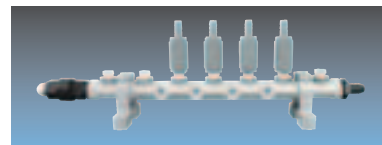
Remote Valve Kit

95-RV Remote Solenoid Valve for use with 951 Flush Series

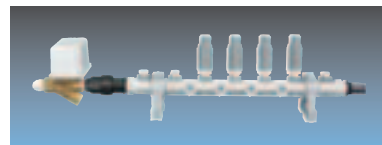
84-65-32K

951 Flush Manifold Series

951 Flush Manifold dilutes concentrated product with water and delivers chemical solution to laundry machines in a safe and efficient manner. Flush manifold comes complete with solenoid valve, pressure switch, and up to six chemical inlets. Inlets are either 1/4" or 3/8" push on or 3/8" barb fittings. Units can be field converted from one connection to another.



951-4B



951-4P-V

Flush Manifold Series

MODEL No.	INPUTS	FITTINGS	SOLENOID VALVE
951-4P-V	4	3/8" Push	Yes
* 951-4B	4	3/8" Barb	No
* 951-4P-P14	4	1/4" Push	No

* For use with valve module kit 84-65-32 or other DEMA solenoid valve

Additional models available with 3-7 chemical inputs. Change number from 3-7 for desired inputs, identify fitting as P (push) or B (barb) and add -V to include a solenoid valve

844P Atlas Laundry System

Atlas is the premier on-premise laundry system with a unique modular design that provides easy addition of up to 7 pumps for greater flexibility. Atlas can accommodate 2 different pump sizes to handle an array of machines, capacities and applications. Choose between the industry proven standard Quick Change Blue Pump for 16 ounce (475 ml) per minute or the Large Blue QC Pump for 50 ounces (1480 ml) per minute.

Atlas Features:

- ABS enclosure with formula select keypad and display
- Modular design that accommodates from 2-7 pumps (6 pumps with a flush manifold)
- Two quick change pump options for regular or large volume
- Multiple tube options to handle virtually any chemistry
- Quick connect John Guest or barb connection options
- 100-265 VAC 50/60 Hz with auto-switching power supply
- 24 VDC 105 rpm gear motors
- Optional USM formula remote for user formula selection
- Separate stand alone EDSM remote for programming and formula storage plus can be used for formula selection
- Data collection and reporting capable through optional Data Grip (can be used for programming/formula selection)
- Order with no remote, with USM or with ESDM.



844P-5PPJJJ-V

Options and Availability

844P - 5 PPJJJ-V U

- Optional remote U = USM E = EDSM (blank = none)
- Optional flush solenoid valve V
- *Pump configuration from left to right
- P = Large Blue Pump, EPDM tube, and JG fittings
- J = Blue QC Pump, EPDM tube and JG fittings
- Number of Pumps
- Model number

*Additional pump, tube and connection configurations are available.
Contact customer service for additional models.

COMMON MODELS:

Model No.	Description
844P-4JJJJ-U	4 Blue QC pumps with EPDM tubes, 3/8" JG fittings and USM remote
844P-5JJJJJ-E	5 Blue QC pumps with EPDM tubes, 3/8" JG fittings and EDSM remote
844P-5NNNNN	5 Blue QC pumps with EPDM tubes, 3/8" barb fittings and NO remote
844P-5PPJJJ-U	5 pumps (2 Large Blue and 3 QC Blue) with EPDM tubes, 3/8" JG fittings, USM remote

846E Industrial Laundry Master Dispenser

The 846E has all the same electronic and programming features as the Atlas but in a large stainless steel case that can accommodate up to 6 Large Blue (50 oz / 1480 ml per min.) or large C4 (40 oz. /1185 ml per min.) pumps. The 846E uses AC pump motors for unmatched durability in industrial applications.

846E Features:

- Stainless Steel enclosure that can accommodate up to 6 pumps
- 100-230 VAC 50/60 Hz auto switching power supply
- 115 or 265 VAC 115 rpm gear motors
- Four pump options with multiple volume and other features
- Multiple tube options to handle virtually any chemistry
- Optional USM formula remote for end user formula selection (not required)
- Separate stand alone EDSM remote for programming and formula storage plus can be used for formula selection
- Data collection and reporting capable through optional Data Grip (can be used for programming/formula selection)
- Order with no remote, with USM or with ESDM.



846E-6ZZZZZZ Shown with C4 pumps

846E Options and Availability

846E - 5 TTTTT-U

- Option remote U = USM E = EDSM (blank = none)
- *Pump configuration from left to right
- T = Large Blue Pump, EPDM tube, JG fittings, 115 VAC
- S = Large Blue Pump, EPDM tube, barb fittings, 115 VAC
- Z = C4 Pump, EPDM tube, no fittings, 115 VAC
- Number of Pumps
- Model number

*Additional pump, tube and connection configurations are available.
Contact customer service for additional models.

COMMON MODELS:

Model No.	Description
846E-6SSSSSS	6 Large Blue pumps with EPDM tubes, 3/8" barb fittings, 115 VAC, no remote
846E-6TTTTTT	6 Large Blue pumps with EPDM tubes, 3/8" JG fittings, 115 VAC, no remote
846E-6ZZZZZZ	6 C4 pumps with EPDM tubes, no fittings, 115 VAC, no remote

Note that an EDSM (or Data Grip) is required for programming a 844P and 846E but can be used for multiple units

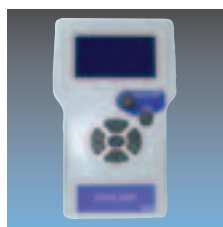
Programming, Reporting and Formula Select Remotes



84-65-38

Enhanced Digital Select Module EDSM II Remote

The EDSM II is a hand held remote used to program the Atlas and 846E dispensers and can also be used as an end user formula select. It can store up to 30 formulas and be used to program any number of Atlas or 846E dispensers. The EDSM II can be customized with formula names, has multi-language programming and is password protected.



84-65-39DG

Data Grip Data Collection and Reporting Module

Data Grip is a hand held data collection system designed for use with the Atlas and 846E. Data Grip's portable design is ideal for periodic monitoring, audits and troubleshooting problem accounts and can be used as the primary formula selector in place of EDSM or USM.

- Multi-language display and reports – English, Spanish, French and Portuguese
- Calculates product usage, product cost and formula costs in fluid ounces, gallons and pounds or milliliters, liters and kilograms
- Three different time period reports available – Date to Date, Billing Date and Billing Cycle
- Concise printable reports downloaded via USB port & USB device

Universal Select Module (USM) End User Formula Selector

The USM remote is an optional formula selector for Atlas and all LaundryMaster dispensers. The USM provides a convenient easy to understand formula selector.



84-65-31



844-40BBBB0

844 Laundry Master

The 844 is a smaller stainless cabinet that can be equipped with 3 to 6 pumps, uses the USM for formula selection and has on-board programming. The 844 can be equipped with the QC Blue Pumps or the C2 pump plus can accommodate up to 2 large C4 pumps on the ends.

844 Features:

- Stainless Steel enclosure accommodates up to 6 pumps
- Three pump options with volume from 16 ounces (475ml) per minute to 50 ounces (1480ml) per minute
- 115-230 VAC 50/60 Hz power supply
- Multiple tube options to handle virtually any chemistry
- 9 formula capability and separate USM formula remote
- On-board programming

845 Industrial Laundry Master

The 845 has all the same electronic and programming features as the 844 but in a larger stainless case that can hold up to 6 Large Blue (50 oz / 1480 ml per min.) or C4 (40 oz. / 1185 ml per min.) pumps. The 845 uses a 115-230 VAC 50/60 Hz power supply and DC pump motors.

846 AC Models with no electronics

846-6NE115 6 pump AC Dispenser with no electronics (115VAC)

846-6NE230 6 pump AC Dispenser with no electronics (230VAC)

DEMA Laundry Features:

All DEMA 844, 845 and 846 Systems have these common features and modes

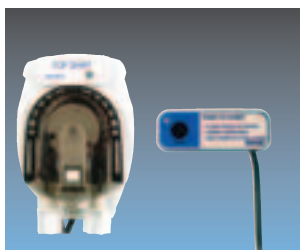
AUTO FORMULA SELECT: Allows laundry machine microprocessor to choose formula soil classification by sending an appropriate length signal to main control board.

RELAY: Allows laundry machine microprocessors to control all functions of the dispenser. Will accept any number of programs sent by the laundry microprocessor.

SEQUENCE: Used on non-programmable, fixed time, and older machines that do not have adequate programming functions. Operates by counting drain closings and pumping pre-determined amounts of product at correct drain closing.

MANUAL FORMULA SELECT: 9 formula keypads allow non-microprocessor laundry machines to have specific formulas for various soil classifications. Both keypads have bleach defeat and emergency stop buttons.

8400 Top Shot



8400

Top Shot is a low cost option for home style laundry machines and perfect for self serve, low volume or special one product applications. TOP Shot is designed using the proven Olympian platform and is ideal for home style up to 75 lb. (35 kg.) commercial machines and available with EPDM or Silicone Squeeze tubes.

8400 Top Shot Single product with remote start and installation kit

8401 Top Shot 230 V International model

81-245-1 Remote programmer needed for 8400

830 Series Single and Multi-Product



830K-1-1

830 Series LaundryMaster dispensers are designed to dispense 1 or 2 products into top loading, coin operated, and other laundry machines up to 100 lb. (45 kg.) capacity. Pumps are triggered by a signal from the laundry machine or by pushing start button.

830K-1-1 Single product with installation kit

831K-1-1 Two product laundry with installation kit

83-R1 One button remote start switch

83-R2 Two button remote start switch

Additional models available, contact customer service

84-130-1 Low Level Alarm



84-130-1

Designed for use with the Atlas, 846E or as a stand alone system, the Low level alarm can be used for laundry, warewash or other applications when out of product notification is necessary. Visual and audible alarms are activated when the low level sensor is triggered. An LED light with space to identify the product name on the unit identifies which product needs changing.

633 Blend Centers



633GAP-B1



3 MODEL 633GAP UNITS
SHOWN COUPLED TOGETHER

Blend Center's modular design lets you easily couple together any number of stations to create any system to meet your needs. Mix and match bottle and bucket fill and choose from blue, red, green, yellow, black, or white buttons. Models listed include Action Gap backflow. Use AG instead of GAP for Air Gap.

Model 633GAP-1

Action Gap backflow with 1 gpm (4 liters/minute) proportioner

Model 633GAP-4

Action Gap backflow with 4 gpm (16 liters/minute) proportioner

681 Blend Centers

681 units are stainless steel and plastic cover dispensers. Models listed below include 4 gpm (16 liters/minute) proportioners but can be ordered with any combination of high/low flow.



681GAP-3P



681GAP-2

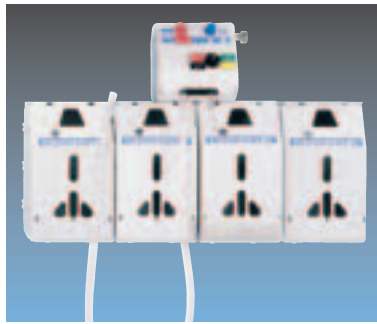
STATION	MODEL No.	COVER MATERIAL
1	681GAP-1	Stainless Steel
2	681GAP-2	Stainless Steel
2	681GAP-2P	Plastic
3	681GAP-3	Stainless Steel
3	681GAP-3P	Plastic
4	681GAP-4	Stainless Steel
5	681GAP-5	Stainless Steel

Blend Safe II Dispensing System

Blend Safe II is a modular dispensing system with the flexibility to be used with or without locking cabinets and options to dilute 1-4+ products with 2 fill rates. The cabinets come with removable drip trays, can be mounted vertically or horizontally and hold bottle sizes up to 5 liters (1.3 gal). Models listed include Action Gap backflow. Use AG instead of GAP for Air Gap.



662-GAP-1



662-639GAP



66-148GAP-2

661 Blend Safe Stainless Steel Locking Dispensers

The 661 Blend Safe Series offer safety and security when it is necessary for gallon bottles to be self contained inside the dispenser. Units are lightweight and have a mounting flange outside the dispenser for easy installation.

Model 661GAPB

One station (1 gpm) with Action Gap backflow preventer

Model 661GAPDB

One station with two buttons (1 gpm and 4 gpm) with Action Gap backflow preventer

Model 661GAP-4

Four station with Action Gap backflow preventer (standard configuration is three 1 gpm proportioners and one 4 gpm proportioner)

Model 661GAPS-4

four station with Action Gap backflow preventer and stainless steel drip tray



661GAP-4



661GAPDB

Blend Safe II Model Options:

	DISPENSER ONLY NO CABINET	DISPENSER WITH CABINETS		
		1 Cabinet	2 Cabinets	4 Cabinets
Single Station (1 button) Bottle Fill / Bucket Fill	66-144GAP-1 / 66-146GAP-1	662-GAP-1 / 662-GAP-4		
Dual Station (2 buttons) 2 bottle fill ports	66-148GAP-1	662-2GAPDB-11	662-2GAP-11	
1 bottle & 1 bucket fill	66-148GAP-2	662-2GAPDB-14	662-2GAP-14	
2 bucket fill ports		662-2GAPDB-44	662-2GAP-44	
4 Station (4 buttons) 4 bottle fill ports			662-4GAP-1111-2	662-4GAP-1111-4
3 bottle & 1 bucket			662-4GAP-1114-2	662-4GAP-1114-4
2 bottle & 2 bucket			662-4GAP-1144-2	662-4GAP-1144-4
Dial-A-Blend Systems 1 product at 4 dilutions	66-149GAP-2	662-635GAP-4		
4 products bottle & 1 bucket	66-151GAP			662-639GAP
4 products bucket fill	66-150GAP-2			662-637GAP-4
4 products bottle fill	66-150GAP-1			662-637GAP-1
4 products bottle and 4 products bucket fill	66-151GAP-2			

Additional models available, contact DEMA customer service

Dilution at Hand™ Extreme Dispensing System

The Dilution at Hand (DAH) Extreme has a sleek design and enhanced color scheme that provides a modern appearance in any housekeeping environment plus multiple features to enhance productivity and dispensing flexibility. DAH Extreme offers the convenience of 1 handed bottle filling and point of use remote bucket fill activation. Its modular design allows the dispensers to be used with or without locking cabinets and with or without selector valves for the ultimate flexibility from 1 to 8 product options.

Dilution at Hand™ Extreme features:

- Remote fill option for easy filling of buckets and scrubbers when location flexibility is required
- One-hand bottle fill allows operator more flexibility when filling spray bottles
- Action Gap and Air Gap backflow options to meet local plumbing agency requirements
- Sleek design and enhanced color scheme to present modern appearance for end user accounts
- Snap-together selector valve design reduces number of components from 14 to 5, and eliminates all metal components resulting in a maintenance free selector
- 1 gallon-per-minute flow control disc improves dispensing accuracy with ultra lean dilutions as compared to other dispensing systems
- Optional 1 gallon (5L) or 2 liter (1/2 gal.) locking enclosures are available to meet today's various packaging sizes and feature:
 - Modular design allows any number of cabinets to be coupled together
 - Built-in hinges improve cabinet durability
 - Molded drip tray snaps into locking enclosure



801GAP



802GAP



804GAPRF



830GAPRF-Q1G



802GAPRF-S1G



ONE HAND BOTTLE FILL



REMOTE BUCKET FILL

Single Station Options / One Fill Port Option

Single stations are available with the following options:

- 1.** Bottle fill or bucket fill. Choose either low flow bottle fill or high flow bucket fill with activation at the unit or remote point of use activation.
- 2.** Dedicated single product or multi-product/dilution. Choose either a dedicated product fill port or a fill port with selector valve for up to 4 products or 4 dilutions.
- 3.** Stand alone or with locking enclosure/s or rack. Choose from either 1 gallon (5 L.) or 2 liter (1/2 Gal.) locking modular enclosures or a 1 gallon / 3+ liter rack for either 1 product or 4 products. The modular enclosures snap together to form any combination of cabinets

Dual Station / Two Fill Port Option

Dual stations have two filling ports and available with the following options:

1. Bottle fill only, bottle & bucket fill or bucket fill only. Choose any combination of low flow bottle fill or high flow bucket fill. Bucket fill is available with activation at the unit or remote point of use activation.
2. Dedicated single product or multi-product/dilution at each port. Each fill port can be dedicated to a single product or equipped with a selector valve for up to 4 products or 4 dilutions. With 2 filling ports, a dual station can dilute from 1 to 8 products or 8 dilutions.
3. Stand alone or with locking enclosure/s or rack. Choose from either 1 gallon (5 L.) or 2 liter (1/2 gal.) locking modular enclosures or a 1 gallon / 3+ liter rack for either 1 product or 4 products. The modular enclosures snap together to form any combination of cabinets.



FLOW CONTROL DISC



SELECTOR VALVE



BUILT IN HINGE



822GAPRF



830GAPRF



831GAP

DISPENSER DESCRIPTION	MODEL NUMBERS						
	DISPENSER ONLY	DISPENSERS WITH LOCKING ENCLOSURE/S					
		SINGLE (ONE) ENCLOSURE		DUAL (TWO) ENCLOSURES		QUAD (FOUR) ENCLOSURES	
		1 GAL / 5 LTR	2 LITER / 1/2 GAL	1 GAL / 5 LTR	2 LITER / 1/2 GAL	1 GAL / 5 LTR	2 LITER / 1/2 GAL
SINGLE STATION FOR 1 PRODUCT							
Bottle Fill	801GAP	801GAP-S1G	801GAP-S2L				
Bucket Fill	802GAP	802GAP-S1G	802GAP-S2L				
Bucket Fill with Remote Activation	802GAPRF	802GAPRF-S1G	802GAPRF-S2L				
SINGLE STATION WITH DIAL-A-BLEND SELECTOR (1-4 PRODUCTS)							
Bottle Fill for 4 Chemicals	803GAP					803GAP-Q1G	803GAP-Q2L
Bucket Fill for 4 Chemicals	804GAP					804GAP-Q1G	804GAP-Q2L
Bucket Fill for 4 Chem. with Remote Activation	804GAPRF					804GAPRF-Q1G	804GAPRF-Q2L
Bottle Fill for 1 Chemical at 4 Dilutions	805GAP	805GAP-S1G	805GAP-S2L				
Bucket Fill for 1 Chemical at 4 Dilutions	806GAP	806GAP-S1G	806GAP-S2L				
Bucket Fill for 1 Chem. at 4 Dil. w/Remote Fill	806GAPRF	806GAPRF-S1G	806GAPRF-S2L				
Bottle Fill for 4 Chem. w/ 1 Handed Fill Only	809GAP					809GAP-Q1G	809GAP-Q2L
DUAL STATION FOR 1-2 PRODUCTS							
2 Bottle Fill Ports	820GAP			820GAP-D1G	820GAP-D2L		
1 Bottle and 1 Bucket Fill Ports	822GAP	822GAP-S1G	822GAP-S2L	822GAP-D1G	822GAP-D2L		
1 Bottle and 1 Bucket Fill w/ Remote Fill	822GAPRF	822GAPRF-S1G	822GAPRF-S2L	822GAPRF-D1G	822GAPRF-D2L		
2 Bucket Fill Ports	824GAP			824GAP-D1G	824GAP-D2L		
DUAL STATION WITH DIAL-A-BLEND SELECTOR/S (1-8 PRODUCTS)							
1 Bottle Fill Port with Selector (up to 4 Chem.) and Bucket Fill for 1 Chemical	830GAP					830GAP-Q1G	830GAP-Q2L
1 Bottle Fill Port with Selector (up to 4 Chem.) and Remote Bucket Fill for 1 Chemical	830GAPRF					830GAPRF-Q1G	830GAPRF-Q2L
1 Bottle Fill Port with Selector 1 Chemical at 4 Dilutions and Bucket Fill for 1 Chem./Dilution	832GAP	832GAP-S1G	832GAP-S2L	832GAP-D1G	832GAP-D2L		
Dual Selector Valves for Bottle and Bucket 8 total products (1-4 each selector)	831GAP					831GAP-Q1G	831GAP-Q2L
Dual Selector Valves for Bottle and Remote Bucket 8 total products (1-4 each selector)	831GAPRF					831GAPRF-Q1G	831GAPRF-Q2L

NOTE: Action gap back flow preventer listed. For air gap substitute AG for GAP in part number (examples: substitute 801AG for 801GAP). Additional dispensers are available and not listed.

Additional components may be needed to run product/s at multiple dilutions. **Contact DEMA customer service or your Regional Manager with any questions.**

Accessories and Spare Parts



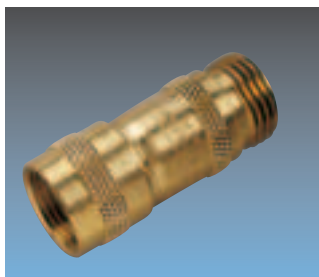
44-3N-6

44-3N-6

Six feet (2 meters)
nylon braided hose

44-3-6

Six feet (2 meters)
black hose



66-43

66-43

Pressure regulator
(40 psi / 2.5 bar) with
GHT connections



16-30 with 61-22-3

16-30

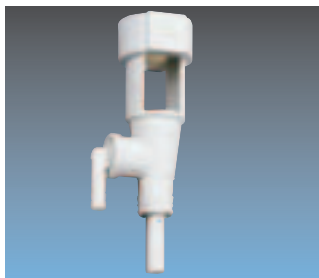
Action Gap backflow
preventer

61-22-3

Four gpm proportioner

61-99-2

One gpm proportioner



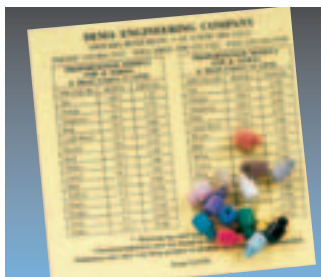
61-22-3BAG

61-22-3BAG

Four gpm air gap
proportioner

61-32BAG

One gpm air gap
proportioner



100-15K

100-15K

Tip kit for dilutions from 4:1 to 427:1

100-15KU

Ultra lean tip kit for dilutions from 150:1 to 915:1

44-61P

Capillary tip for dilutions of 512:1 to 1024:1 and leaner



100-15KU



68-6

68-6 Pressure Indicating

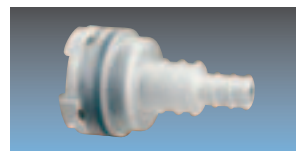
Tee is designed to protect
faucet backflow devices
not rated for continuous
supply pressure and to
virtually eliminate hot cold
water cross connection.
This device is tested and
complies with ASSE 1055-
1997 and required by some
state and local regulatory
agencies. Check local
plumbing regulations for
back flow and connection
requirements.

68-6QD1

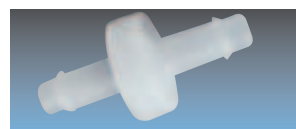
Tee with Male Quick
Disconnect

68-6QD2

Tee with Male and Female
Quick Disconnect



100-16E



60-54

100-16E

1/4" and 3/8" Diaphragm foot
valve with EP seal

100-16S

1/4" and 3/8" Diaphragm foot
valve with silicone seal

100-16V

1/4" and 3/8" Diaphragm foot
valve with viton seal

60-54

1/4" in line check valve

100-12

Eight feet 1/4"
ID inlet tubing

61-21

Six feet 1/2" ID outlet tubing for
Action Gap backflow preventer
and proportioner

63-83

Six feet 9/16" ID outlet tubing
for Air Gap proportioner

Racks for Chemical Bottle Storage

930-1R

One station non-locking
rack for round bottles

930-1F

One station non-locking
rack for F-style bottles

931-2

Two station locking rack

930

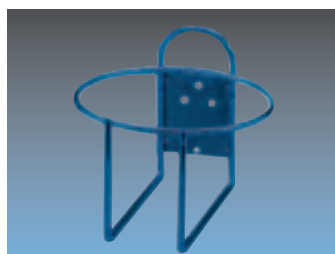
Three station non locking rack

931

Three station locking rack



931-2 13 1/2"x6 1/2"



930-1R 7 5/8"x4 3/8"



931 19 1/2"x6 1/2"



440-23BT

440 WATCH GUARD Reservoir Mounted Float Valve System

Watch Guard is designed to reduce service and potential problems with more reliable water valve activation. The float is filled with water soluble material and the 90° chemical barb rotates 180° to ensure the chemical pick-up tube does not kink.

- Mounting bracket included with every system
- On-Off valve included on all 440 chemical series systems
- Metering tip kit included with every unit

MODEL NO.	DESCRIPTION
440-23BT	4 gpm flow rate Action Gap backflow protection
440-24	2.5 gpm flow rate Action Gap backflow protection
437P-21	22 gpm flow rate with siphon breaker
440N	6 gpm (water valve only)
437PN	64 gpm (water valve only)

High Flow Dispensers



607-3

Model 607-3 High Flow Dispenser fills Auto Scrubbers and other large reservoirs at 10 gallons per minute (40 liters per minute) to reduce fill time.

- 10 gpm flow rate at 40 psi (3/4" or larger water supply required)
- Vacuum breaker installed
- 10 feet discharge hose
- Metering tips determine dilution ratio
- Stainless steel cover offers durability and industrial appearance
- PVC proportioner allows dual chemical injection

Drum Mount Dispensers

Model 161 and 162 Series drum mount dispensers mount to any 2 1/2" bung opening to dispense chemical solution directly from the drum or tote at the correct dilution. Various models are available to meet standard and high induction applications.

Model 162 Standard model dispenses 5 gpm (20 liters per minute) with maximum induction of 5-1, metering screw adjustment

Model 162-3 Standard model dispenses 5 gpm with a maximum induction of 5-1, metering tip adjustment

Model 161 High induction model dispenses 5 gpm with a maximum induction of 1.5-1, brass construction with metering screw adjustment.

Model 162HC High induction model dispenses 1/2 gallon per minute (2 liters per minute) with a maximum induction of more than 1-1 ratio. Ideal dispenser for applications such as antifreeze mixing where more product than water is required.

Model 162HDM-2 High Flow Drum Mount Proportioner mounts directly to a 2 1/2" bung opening on a drum or tote and dispenses at 10 gallons per minute (40 liters per minute). Draws up to 12 ounces per gallon chemical solution and discharge hose can be up to 25 feet (8 meters) long. Shutoff valve (DEMA #90-15) can be put at end of hose for on/off control and uses metering tips to determine dilution ratio.



162HDM-2



162HC



162

RAPID FIRE Spray and Foam Dispenser

Effective cleaning and sanitizing for:

- Supermarket meat room, seafood, and bakery departments
- Kitchens and food preparation areas
- Locker rooms and showers in schools and health clubs
- Food processing and packaging plants

Innovative Features and Benefits:

- Single knob to control water flow and chemical selection
 - Full water flow when valve opens
 - Accurate dilutions
 - Eliminates confusion
 - Prevents mixing of chemicals
- Removable Injector
 - Easy maintenance and replacement
- Built in foam wand hanger
 - Helps prevent foam wand loss or damage



6300-3

Specifications:

- Dimensions
8" W x 9 1/4" H x 5 3/8" D
(203 mm x 235 mm x 137mm)
- 2.7 gpm (10 L.) Injector Flow Rate
- Operating Range
20-125 psi (1.3 - 8.6 bar)
- Water temperature up to
160°F (71°C)
- Functions with up to 50 feet
(15 meters) of 1/2" (13 mm)
ID hose
- Optional hose hanger with hose
strain relief feature
- Stainless steel enclosure and
chemical resistant polypropylene
internal components

MODEL NUMBERS AND KITS

6300-1	Dispenser only
6300-2	Dispenser with 44-3RG red outlet hose, 44-3-6 black inlet hose, and 40-14QD/292QD spray gun / foam wand kit
6300-3	Dispenser with 44-3RG red outlet hose, 44-3-6 black inlet hose, 28-1QD spray gun and 292GQD foam wand
6300-4	Dispenser with 44-3RG red outlet hose, 44-3-6 black inlet hose, 40-14QD/292QD spray gun / foam wand kit and 44-89-112 backflow preventer
6300-5	Dispenser with 44-3RG red outlet hose, 44-3-6 black inlet hose, 28-1QD spray gun, 292GQD foam wand and 44-89-112 backflow preventer

ACCESSORIES

44-3RG	25 feet (8 meters) red hose
44-3N-25	25 feet (8 meters) clear nylon braided hose
44-3-6	6 feet (2 meters) black hose
44-3N-6	6 feet (2 meters) clear nylon braided hose
40-14QD/292QD	Ball valve activated spray gun with quick connect foam wand
28-1QD	Lever controlled spray gun with quick connect nozzle
292GQD	Quick connect foam wand
44-89-112	ASSE 1012 approved constant pressure backflow preventer
44-111-1560	Brass nozzle with quick connect groove
44-111-1560SS	Stainless steel nozzle with quick connect groove
44-6	Stainless steel hose hanger

Additional hoses, spray guns, foam wands, nozzles, and other accessories available through DEMA Customer Service

SprayClean Accessories



28-10D and 292GQD

Spray Gun and Foam Wand set
(order items separately)



40-140D/292QD

Spray Gun and Foam Wand set



44-89

Constant pressure backflow
preventer



44-3N-25

25 Feet (8 meters) nylon braided
outlet hose

44-3

25 Feet (8 meters) black outlet hose

44-3RG (shown)

25 Feet (8 meters) red outlet hose



44-3N-6

6 Feet (2 meters) nylon braided
water supply hose

44-3-6 (shown)

6 Feet (2 meters) black water
supply hose

44-4S

Stainless steel hose bracket

Wall Mounted Dispensers

DEMA manufactures a variety of SprayClean dispensers to meet different cleaning environments. Whether it's a wall mounted unit for cleaning one area or a mobile unit that offers portable cleaning, DEMA can satisfy the requirement. Wash, rinse, and sanitize all from the same system.



606T-2

Model 606T-2 Spray Station II

The Spray Station II is a wall mounted ball valve actuated 2 chemical and rinse system. The unit features easy to turn large handles and a chemical and impact resistant ABS cover.

- Designed for greater durability, reliability and easier serviceability
- Stainless steel manifold system with O-ring seals for easy removability and service



606T

Model 606T Select-O-Matic

Ball valve actuated SprayClean that dispenses two chemical products and clear rinse.

- Stainless steel cover
- Polypropylene injectors for chemical and hard water resistance
- Brass internal components

Portable Foaming and Spraying

Model 289

Pro Foam hose end foamer and sprayer attaches to the end of any garden hose and produces a foam when the aerating wand is attached and sprays when the wand is removed. Quick disconnect allows spray gun to be easily removed from dispenser for clear water rinse. Ideal applications include supermarkets, food service areas, and shower rooms where portability is required. Unit includes a 32 ounce bottle and spray gun with quick disconnect fittings.



289

Compressed Air Foamers

Model 294 mixes chemical solution with water and air to produce a dry, thick, clinging foam to any vertical or horizontal surface for cleaning large areas and areas that require a foam to penetrate for better cleaning results. The foam consistency is changed easily by adjusting either the air or water pressure. PVC body is designed to prevent hard water and chemical buildup to help produce consistent, long term cleaning results.

Applications include:

- food processing plants
- truck and vehicle washing
- bakeries
- school shower areas
- other industrial areas

Model 294D

PVC Compressed Air Foamer body with air inlet port, air adjustment gauge, water inlet connection and tubing for chemical supply. Simply hook up compressed air and water and adjust to produce desired foam. Metering tips determine the correct chemical dilution. Minimum recommended air and water pressure with 25 feet of hose is 40 psi.



294D



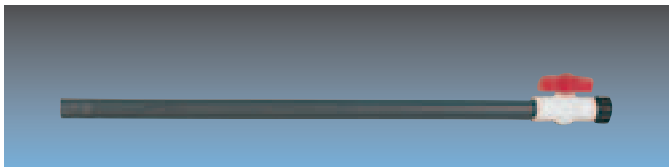
294DC

Model 294DC

Designed for applications that require a compressed air foamer enclosed in a stainless steel housing and ball valves for on/off control of water and air. Air pressure gauge is seen through front cover and easily adjusted while the unit is mounted. Metering tips determine the correct chemical dilution.

Model 93-18

PVC Foam wand used with all DEMA compressed air foamers. Includes water inlet coupling, ball valve for on/off control, and nozzle. Foam throw varies based on water and air pressure mixture. Average throw is 25 feet (8 meters).



93-18

Model 93-14

25 feet 3/4" ID black water outlet hose. 3/4" ID hose is recommended to minimize back pressure put on foamer.

MAXIMUM HOSE LENGTHS AND MINIMUM PRESSURES FOR GOOD FOAM

HOSE SIZE AND LENGTH	MINIMUM PRESSURES	
	Water	Air
25 Feet (8 Meters) of 3/4" ID	40 PSI (2.7 Bar)	40 PSI
50 Feet (15 Meters) of 3/4" ID	50 PSI (3.4 Bar)	40 PSI
75 Feet (25 Meters) of 3/4" ID	60 PSI (4.1 Bar)	40 PSI

FoamStation Dispensers

FoamStation Dispensers are wall mounted or cart mounted compressed air foaming systems that use DEMA's 294D PVC foamer body. Applications for these units include all food processing and food service areas, industrial plants, school shower areas, and other areas that require foaming chemicals to help clean.

Units require an air compressor and at least 40 psi water pressure to produce quality foam.

- PVC foamer body for chemical and hard water resistance
- Polypropylene cover offers neat appearance
- Stainless mounting plate for sturdy mounting
- PVC manifold with slip together fit offers easy field maintenance
- Metering tips determine dilution ratio

Model 692T

Two ball valves provide one foaming chemical and clear rinse from this wall or cart mounted unit.

Model 693T

Three ball valves provide one foaming chemical, clear rinse, and a sanitizer (or other chemical product) spray. The sanitizer product is run through DEMA's P203CT injector that produces 2.7 gallons per minute (10.25 liters per minute) flow.

Model 93-18

PVC Foam wand with plastic ball valve can be used with any of DEMA's compressed air foamers. Material allows it to be used with corrosive chemicals, including many acids.



692T



693T

900 Series Compressed Air Foamers**900-2PU****900 Pump Up Foaming Dispenser**

The 900-2PU pump-up foamer technology provides spot cleaning and sanitation solutions for the industrial and institutional markets. Patented dual tube technology draws the chemical and air from the tank into separate tubes creating thick foam when mixed at the trigger operated foam wand. Flow in the air tube is controlled by a needle valve giving an operator the ability to control foam consistency.

**900-WALL****900 Wall Mounted Foaming Dispenser**

The 900-WALL operates with a pre-mix solution of foaming chemical and water. The unit produces 30 gallons of foam per minute and covers 5-10 cubic feet per minute at 40-80 PSI with up to 25 feet of foam distance.

**925****925 Mobile Foamer**

The 925 is a 25 gallon portable foamer that offers innovative features and ergonomics for industrial and institutional foam cleaning. This unit's four wheel design allows for a wide range of mobility and the convenient drain feature allows for easy emptying.

**910****910 Portable Foamer**

The 910 offers an innovative 10 gallon tank design that allows for easy storage and institutional foam cleaning. The non-pressurized tank promotes safety and consistent foam time after time.

**900-DS4****900-DS4 Doorway Sanitizer System**

The 900-DS4 Doorway sanitizer foaming system allows the control box to be mounted up to 150 feet away from the spray tip assembly. The new foam enhancing nozzle is constructed of Stainless Steel and produces large amounts of foam. This allows for shorter run times and a larger foam coverage area. The 900-DS4 can operate up to three nozzle assemblies simultaneously.

NOTE:

Air compressor is not part of dispenser and required to use all DEMA compressed air systems.

MixRite Water Powered Proportioning Pump

MixRite Water Driven Injectors are water powered proportioning pumps that require no electricity and deliver accurate dispensing across varying water pressure and flow. MixRites use only 10% of the pressure at mid-range to drive the pump (20% maximum) and are easy to adjust and service.

Specifications:

- Chemically resistant nylon reinforced fiberglass body on all models (except PVDF)
- CW models feature stainless steel springs
- CL and PVDF models feature Hastelloy springs
- Chemical shutoff on 571, 573 and 575 units
- Easily replaceable wear parts
- Higher operating range from 2.9 PSI to 120 PSI
- Hose barbs with swivel for easy installation
- Injection from 300:1 to 10:1 (.3% to 10%)
- Flow rate from .09 to 11 gallons per minute
- Includes 7 ft. 3/8" inlet tubing with foot valve strainer
- Dimensions: 19 1/2" high, 7" wide
- Optional Tip Kit for dilutions from 750:1 to 2000:1

574 and 575 Units are available for richer inductions for 33:1 to 10:1

Applications:

- Vehicle Wash
- Food and Beverage Sanitizing, Cleaning and Lubricating
- Machine Tool Coolants and Metal Processing
- Animal Medication
- Foaming for Food Service Sanitation
- Fertigation (Fertilizer/ irrigation injection)
- Many other applications where applying liquid under pressure



50-41-1 Strainer
200 Mesh (80 Micron) Strainer recommended on all installations



571 CW



574 CL



570 CL



570 PVDF



57-11-1 Tip Kit
(for 570 and 571)
for Lean Dilution Ratios 750:1-2000 and Includes 4 metering tips, 8 ft. 1/4" vinyl hose and 1/4"x3/8" barb adapter

MODEL No.	PSI	RATIO	PERCENT	Oz/Gal	FEATURES	APPLICATIONS
570CW	2.9 - 120	300:1 to 50:1	.3% - 2%	.38 to 2.5	Tip Kit	Option Carwash Cleaning Agents & Detergents
571CW	2.9 - 120	300:1 to 50:1	.3% - 2%	.38 to 2.5	Chemical On/Off, Tip Kit Option	Carwash Cleaning Agents & Detergents
572CW	2.9 - 120	250:1 to 25:1	.4% - 4%	.51 to 5.1		Carwash Cleaning Agents & Detergents
573CW	2.9 - 120	250:1 to 25:1	.4% - 4%	.51 to 5.1	Chemical On/Off	Carwash Cleaning Agents & Detergents
574CL	2.9 - 120	33:1 to 10:1	3% - 10%	3.8 to 12.8		Hydrofluoric acids, Tire Cleaners, Chlorine, and other harsh chemicals
575CL	2.9 - 120	33:1 to 10:1	3% - 10%	3.8 to 12.8	Chemical On/Off	Hydrofluoric acids, Tire Cleaners, Chlorine, and other harsh chemicals
570CL	2.9 - 120	300:1 to 50:1	.3% - 2%	.38 to 2.5	Tip Kit Option	Hydrofluoric acids, Tire Cleaners, Chlorine, and other harsh chemicals
571CL	2.9 - 120	300:1 to 50:1	.3% - 2%	.38 to 2.5	Chemical On/Off, Tip Kit Option	Hydrofluoric acids, Tire Cleaners, Chlorine, and other harsh chemicals
572CL	2.9 - 120	250:1 to 25:1	.4% - 4%	.51 to 5.1		Hydrofluoric acids, Tire Cleaners, Chlorine, and other harsh chemicals
573CL	2.9 - 120	250:1 to 25:1	.4% - 4%	.51 to 5.1	Chemical On/Off	Hydrofluoric acids, Tire Cleaners, Chlorine, and other harsh chemicals

NOTE: PVDF available on all models for the most extreme chemicals

Wall and Cart Mounted Compressed Air Foam Systems

MixRite Compressed Air Foam Systems allow any length of hose installed on the outlet of dispenser. The hose length or foam wand nozzle size have no affect on the foam quality, which makes these dispensers ideal for foaming applications utilizing long runs of hose or pipe.



Wall Mount Foam Systems
Compressed Air Foam Systems include MixRite, foam chamber, 25' hose, and foam wand. Spray systems include MixRite, 25' hose and spray gun.

Wall Mounted Units

570WS	Spray unit, 2% induction
571WSR	Spray and Rinse unit, 2% induction
572WS	Spray unit, 4% induction
573WSR	Spray and Rinse unit, 4% induction
573WSFR	Spray, foam and Rinse unit, 4% induction
573WAFR	Compressed Air Foam and Rinse unit, 4% induction
576WBS	Spray bypass unit, 2% induction
577WSR	Spray and Rinse bypass unit, 2% induction
578WBS	Spray bypass unit, 4% induction
579WSR	Spray and Rinse bypass unit, 4% induction
579WSFR	Spray, Foam, and Rinse bypass unit, 4% induction
579WBAF	Compressed Air Foam bypass unit, 4% induction

Cart Mounted units available for all systems listed.

Substitute C for W in part number (example 570CS for 570WS)

582-1 Foam Station III Drop Station

Foam Station III is a drop station designed to work with the 500 series MixRite pumps. Place the Foam Station III wherever you need foam cleaning and supply it with compressed air and diluted chemical. Recommended for use with any .4-4% MixRite system, Foam Station III has these unique features:

- Superior foam and foam control than any other system
- Internal diffuser allows foam generation of chlorinated products
- 60-100 gallons (227-380L) of foam per minute
- Simple ball valve actuation and knob adjustment

Contact DEMA customer service or your Regional Manager for assistance with drop station layout and requirements.



582-1



577 CBSR



901-693T

Mobile Cart Cleaning Systems

DEMA's mobile cart system puts everything needed for cleaning, sanitizing and foaming on two wheels. The unit is available with a wide selection of DEMA spray, foam and proportioning dispensers and is designed to provide a holding platform for chemicals and hangers for hoses. Ideal for use in shower rooms, large kitchens, food processing plants, store food preparation, storage areas and anywhere that permanent installations are impractical.

Mobile Cart Features:

- Pneumatic tires and plastic frame capable of heavy loads up to 600 lbs. (270 kg.)
- A wide selection of DEMA dispensers
- 25 feet (8m) outlet hose and 6 feet (2m) inlet hose on most units
- Spray gun or foam wand included (for spray or foam units)
- Built in hose hangers and secure chemical storage area

AVAILABLE MODELS

MODEL No.	APPLICATION	DESCRIPTION (Dispenser page)
MixRite Systems	Spray & Foam	Wall mount units previous column
901-606T-2	Spray	Spray Clean 2 product plus rinse 3 ball valve actuated unit (pg 19)
901-6300	Spray	Rapid Fire 2 product plus rise dial actuated unit (pg 18)
901-692T	Foam	Foam Station 1 product plus rinse 2 ball valve actuated (pg 20)
901-693T	Foam	Foam Station 2 product plus rinse 3 ball valve actuated (pg 20)

Chemical Injectors

DEMA manufactures two different types of injectors, each having their own way to control water flow. The C series injectors use one of three different water nozzle bushings to control water flow and the B series use an external bypass knob for controlling water flow. Injectors are available from 1/8" NPT up to 1" NPT. (BSP threaded injectors available). When choosing an injector it is important to size the injector according to the application's water flow, not pipe size. Injector metering knobs can be supplied with a metering tip option (example 204CT) or metering screw option (example 204C).

Contact DEMA's customer service for information on DEMA's B and C series injectors and selection tables (Industrial catalog 2007IND) or at www.demaeng.com



204C



204B

Special Injectors

Model 201CHT

1/8" brass injector designed to draw up to 1-1 ratio at 1/2 gallon per minute (2 liters per minute) flow. Ideal for mixture of antifreeze and water for windshield washer filling.

DEMA OFFERS SEVERAL PLASTIC AND STAINLESS STEEL INJECTORS FOR CORROSIVE APPLICATIONS.

Model P203C or P203CT:

3/8" polypropylene plastic injector with flow rate of 4 GPM at 40 psi (16 liters per minute at 2.75 bar)

Model 203BS-2 or 203BST-2:

3/8" stainless steel injector with flow rate range of 3 to 9 GPM at 40 psi (12 to 36 liters per minute at 2.75 bar) 1/2" size available (204 BS-2 or 204BST-2)



P203C



203BS-2

SprayClean Injectors

SprayClean Injectors do not include covers, ball valves, or any other device to make them a complete system. These units include the injector assembly, appropriate spray gun for each model and the chemical inlet tubing assembly. These are very basic units that may be wall or drum mounted to dispense one chemical.

Model 244C Three-position gun allows user to choose chemical, clear water rinse, and off setting at the spray gun. When gun trigger is pulled completely, vacuum is drawn in injector and chemical is dispensed through spray gun. Releasing the trigger halfway to rest against a latch will eliminate vacuum draw of chemical and only spray clear water for rinsing.



244C

Model 244BC Slide valve on chemical injector allows user to choose between wash and rinse setting. Squeezing the spray gun fully open turns the unit on and dispenses either the chemical or clear rinse, depending on slide valve setting. (This model allows for a harder spray when rinsing compared to the 244C model).

Model 244CDM

Drum Mount Model of 244C

Model 244BCDM

Drum Mount Model of 244BC

APPROVALS

DEMA Engineering Co.
ISO 9001:2008 Certified



Action Gap Backflow Preventer

ASSE 1055-1997
IAPMO
CSA
Various U.S. states and cities
Australia

Ultra Gap Air Gap Proportioner

ASSE 1055-1997
IAPMO
ASME
CSA
Various U.S. states and cities
KIWA-Netherlands
Australia
DVGW-Germany
WRC-United Kingdom

Pressure Indicating Tee 68-6

ASSE 1055-1997
IAPMO
ASME

Model 153 and 154

ASSE 1055-97

633 Valve Body

NSF-61

58-1 Siphon Breaker

ASSE 1001

DEMAMaster Dishwash Series

CSA

TITAN Dishwash

CE, CSA

ATLAS Laundry

CE, CSA

METRIC CONVERSIONS

METRIC CONVERSIONS		
To go from	Multiply by	To get
Gallons	3.785	Liters
Ounces	29.57	Milliliters
PSI	0.068	Bar
Inches	25.4	Millimeters
Fahrenheit	$5/9(F-32)$	Celsius
Liters	0.2642	Gallons
Milliliters	0.34	Ounces
Bar	14.5	PSI
Millimeters	0.0394	Inches
Celsius	$9/5C+32$	Fahrenheit

DEMA Global Headquarters

10020 Big Bend Boulevard
St. Louis, MO 63122
Phone: (800) 325-3362
Fax: (314) 965-8319
www.demaeng.com
email: sales@demaeng.com

Viking LLC

512 Industrial Road
Nesquehoning, PA 18240
Phone: (800) 441-1343
Fax: (570) 645-3679
www.viking-injector.com
email: sales@viking-injector.com

DEMA Europe LLC

Mast 25, 3891 KE
Zeewolde, Netherlands
Phone: 31-(0)-36-522-7006
Fax: 31-(0)-36-522-7863
www.demaurope.com
email: sales@demaurope.com

DEMA Australia

Unit 8, 7-11 Parraweena Road
Caringbah N.S.W. 2229
Sydney, Australia
Phone: 61-2-9525-5177
Fax: 61-2-9525-5033
www.dema.com.au
email: sales@demaust.com

DEMA China Representative Office

Room 1317, SIPAI Plaza
103 Cao Bao Road
Shanghai, 200233 P.R. China
Phone: 86 21-5424 7729
Fax: 86 21-6464 1721
email: johnzhu@demachina.com.cn

DEMA Latin America Sistemas de Dosegem Ltda

Rua Andre Ampere, 153 Cj. 67
Edificio Terra Brasilis
CEP 04562-080 Brooklin Sau Paulo Brazil
Phone/Fax: (5511) 3853-8958
Mobile: (5511) 8579-3477
email: omarpuras@uol.com.br

**DEMA**®